



July 5, 2023

The Secretary, Listing Department
BSE Limited
Phiroze Jeejeebhoy Towers,
Dalal Street,
Mumbai - 400 001, Maharashtra, India.
Scrip Code: 500470

The Manager, Listing Department
National Stock Exchange of India Limited
Exchange Plaza, 5th Floor, Plot No. C/1,
G Block, Bandra-Kurla Complex, Bandra (E),
Mumbai - 400 051, Maharashtra, India.
Symbol: TATASTEEL

Dear Madam, Sirs,

Sub: Submission of Presentation to be made to Analysts/Investors

Please find enclosed herewith the presentation to be made to Analysts/Investors at the 116th Annual General Meeting of Tata Steel Limited scheduled to be held on July 5, 2023.

This presentation is being submitted in compliance with Regulation 30(6) of the SEBI (Listing Obligations and Disclosure Requirements), Regulations, 2015.

This is for your information and records.

Yours faithfully,
Tata Steel Limited

Parvatheesam Kanchinadham
Company Secretary &
Chief Legal Officer (Corporate & Compliance)

Encl: As above

TATA STEEL LIMITED

Registered Office Bombay House 24 Homi Mody Street Fort Mumbai 400 001 India
Tel 91 22 6665 8282 Fax 91 22 6665 7724 Website www.tatasteel.com
Corporate Identity Number L27100MH1907PLC000260

GROWTH WITH PURPOSE

Annual General Meeting 2023

Presentation to shareholders



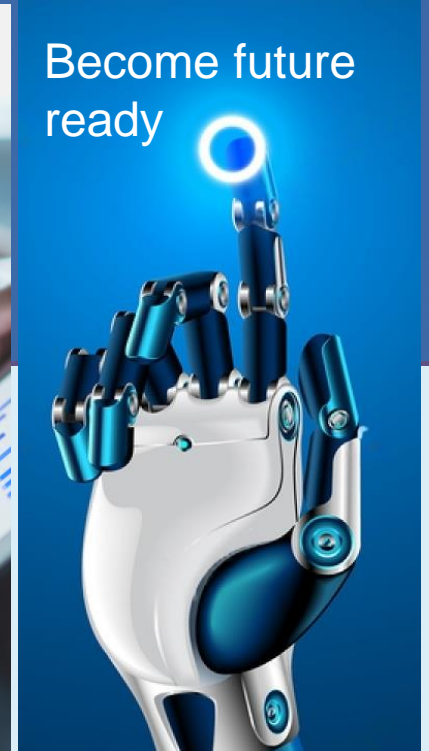
Safe harbour statement

Statements in this presentation describing the Company's performance may be "forward looking statements" within the meaning of applicable securities laws and regulations. Actual results may differ materially from those directly or indirectly expressed, inferred or implied. Important factors that could make a difference to the Company's operations include, among others, economic conditions affecting demand/supply and price conditions in the domestic and overseas markets in which the Company operates, changes in or due to the environment, Government regulations, laws, statutes, judicial pronouncements and/or other incidental factors.



Focused on creating sustainable value

TATA STEEL

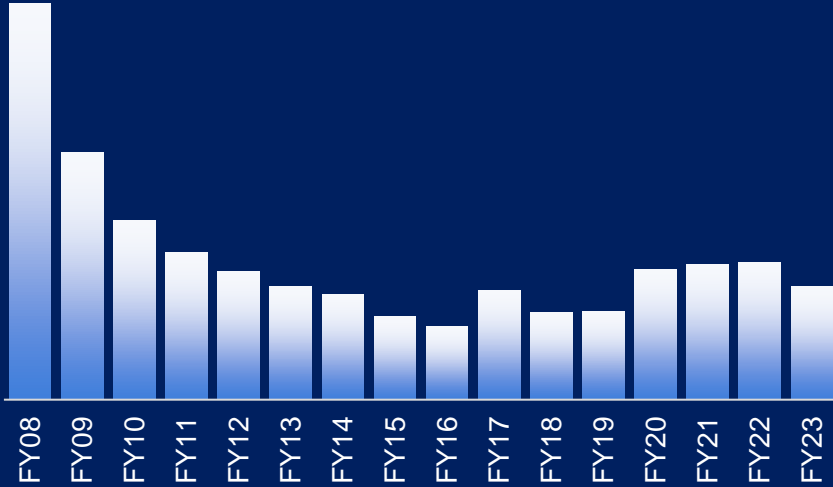


Focus on 'Zero harm'

Committed towards excellence in Safety & Health of employees¹

Safety remains a top priority

71% ▼ LTIFR*
In the last 15 years



*Lost Time Injury Frequency Rate per million-man hours worked, for Tata Steel Group



Integrated Command Center to monitor



Safety Leadership Development Center



"FELT Leadership" to drive risk perception



Focus on Health of employees

Note : 1. Employees refers to Permanent and Contract workforce

Improving quality of life of our communities

Social capital and scalable change models to enable deep societal impact



Strengthening tomorrow : Reached out to 6.7 lakh + children via signature education programs and >56,000 brought back to school



Rural & Urban Education



Tribal Cultural Heritage



Women & Youth Empowerment



Household Livelihoods



Grassroots Sports



Household Health & Nutrition



Grassroots Rural Governance



Dignity for the Disabled



Water Resources

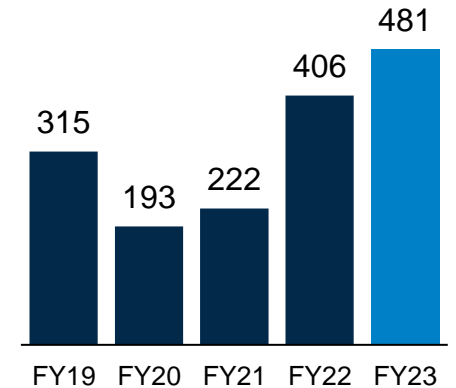


Public Infrastructure

31.5 Lakh+

Lives Impacted¹

~Rs 1,600 crores spent² since FY19

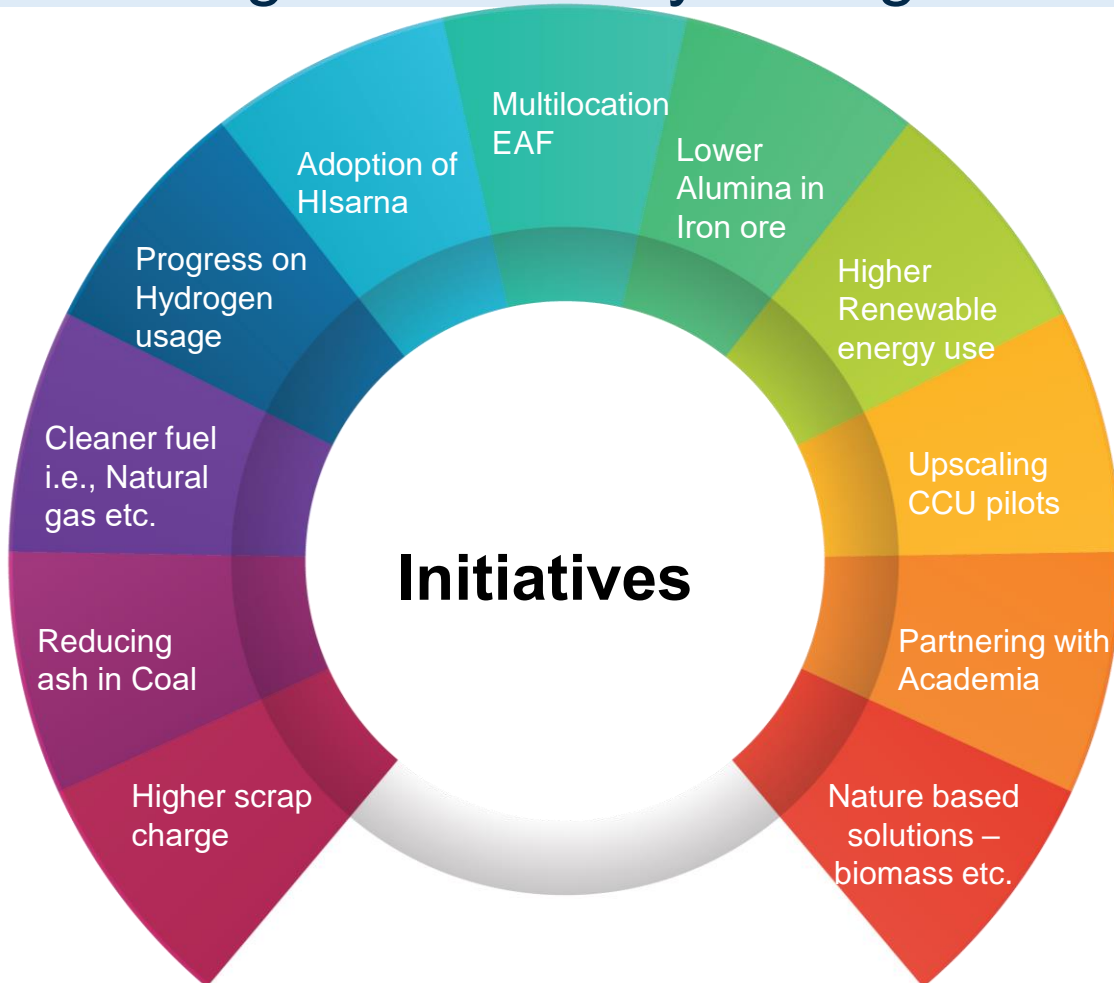


¹ Cumulative as on FY23

² CSR Spending by Tata Steel Standalone

Net Zero by 2045

Pursuing sustainability through multiple pathways



FY23 progress

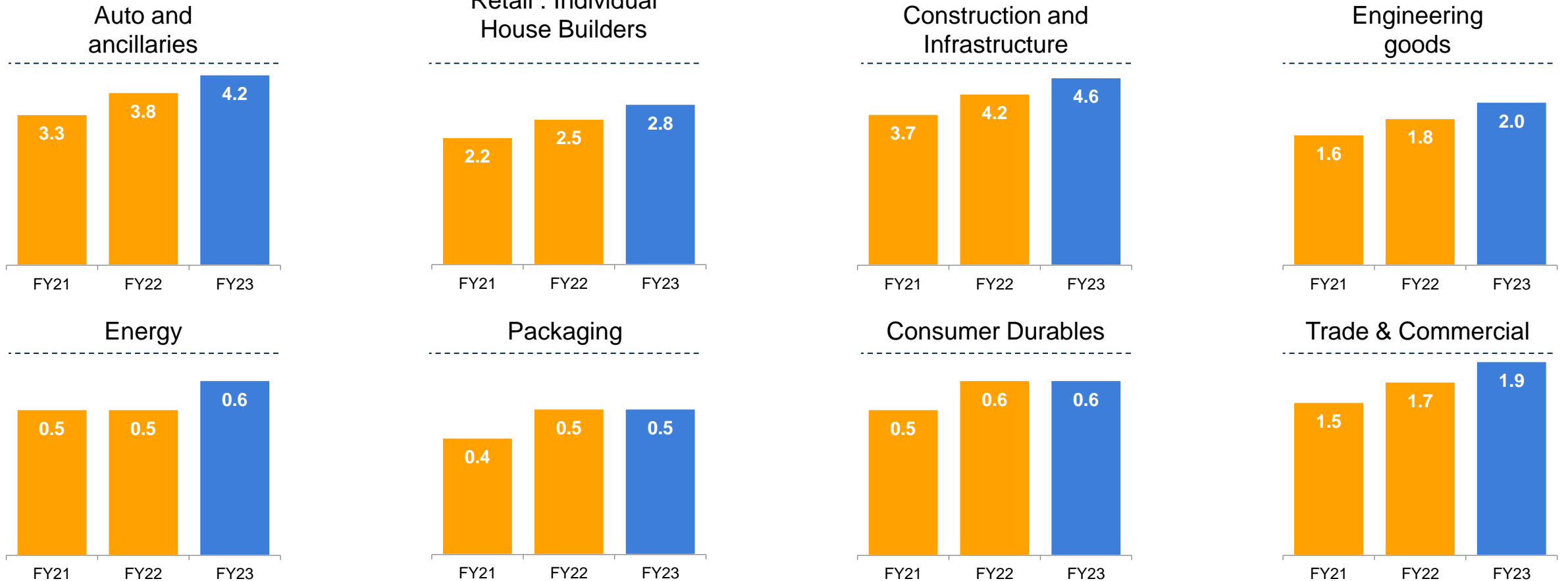
- Improvement in Blast furnace fuel rates esp. at Jamshedpur and TSLP
- Signed expression of principles with Dutch govt. for decarbonisation of Ijmuiden operations
- Initiative to replace ~379 MW of coal based power with renewable energy
- Increase in steel scrap usage across locations
- Trial for injecting H₂ into blast furnace to reduce coke usage
- Pilot to convert captured CO₂ to polycarbonate
- Constructing dedusting plant at Ijmuiden to reduce emissions
- Trial of 1 kWh TEG to convert low grade waste to Electricity

India¹

Tata Steel is focused on market leadership in chosen segments

Domestic deliveries up 11% YoY

Sales in mn tons



Note : 1. India incl. Standalone and Tata Steel Long Products, FY21 & FY22 are estimates, **Auto and ancillaries** incl. B2B, ECA, Wire and Specialty steel sales; **Retail** is B2C includes Tiscon, Shaktee, Galvanised Plain Retail, Tubes & Wires; **Packaging** incl. Tinplate, High Tensile steel strapping, LPG etc., **Construction & Infra** is B2B sales to construction firms; **Energy** incl. Oil & Gas, Wind, Solar etc.; **Consumer Durables** is to Furniture, Appliances; **Engineering** incl. Shipbuilding, Railways, Capital Goods etc.; **Trade & Commercial** is sales to rerollers, fabrication etc. B2B – Business to Business, ECA – Emerging Corp. accounts, B2C – Business to Consumer; LPG – Liquefied Petroleum Gas

Europe

Product mix oriented towards evolving needs

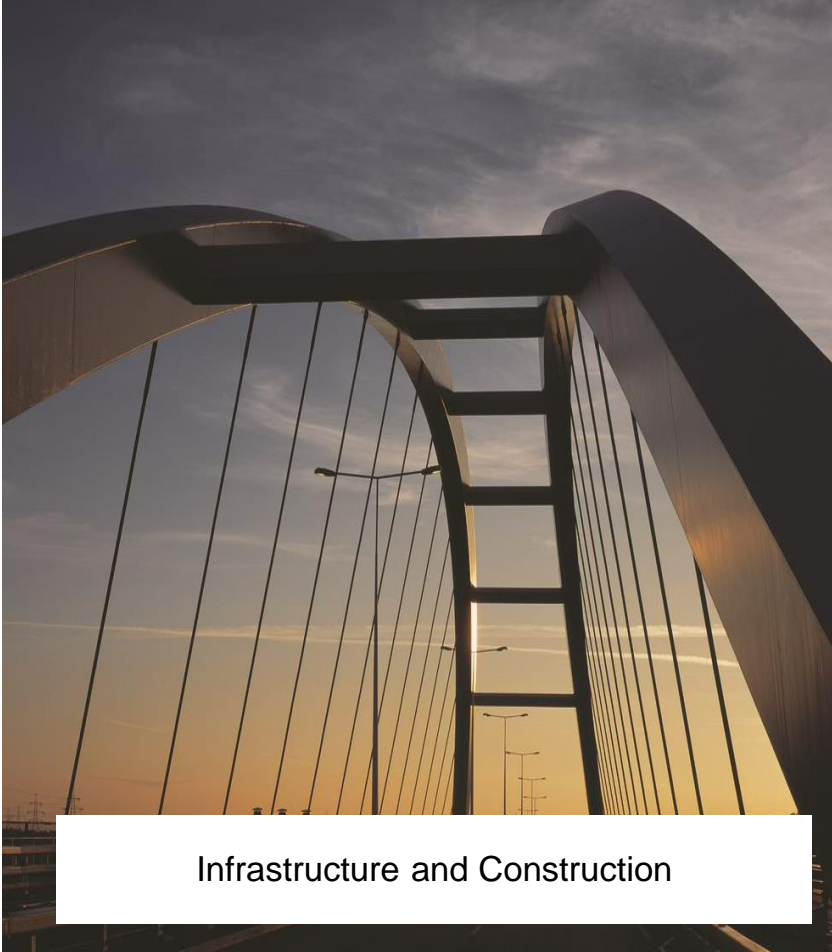
Green steel offerings – Zeremis in Netherlands & Optemis in UK



Supplier for leading Auto OEMs



Energy and Mobility



Infrastructure and Construction

Note : Zeremis = Zero Emissions (Tata Steel Netherlands), Optemis = 0% Port Talbot Emissions (Tata Steel UK), OEM – Original Equipment Manufacturer

Some milestones we are proud of



36 million tons of Iron ore mined



500+ kt slag used for road construction



1st in India with Responsible Steel certification



1st in India to receive license for weather resistant steel



Global Diversity, Equity & Inclusion lighthouse



100+ transgender employees onboarded



Dream • Click Build

Rs 1,730 crores sales, >18% YoY growth



Improvement savings of Rs 6,300+ crores



100+ new products developed



150+ patents filed and granted



Consistent spend on R&D



Fibre reinforced composites for Vande Bharat coaches

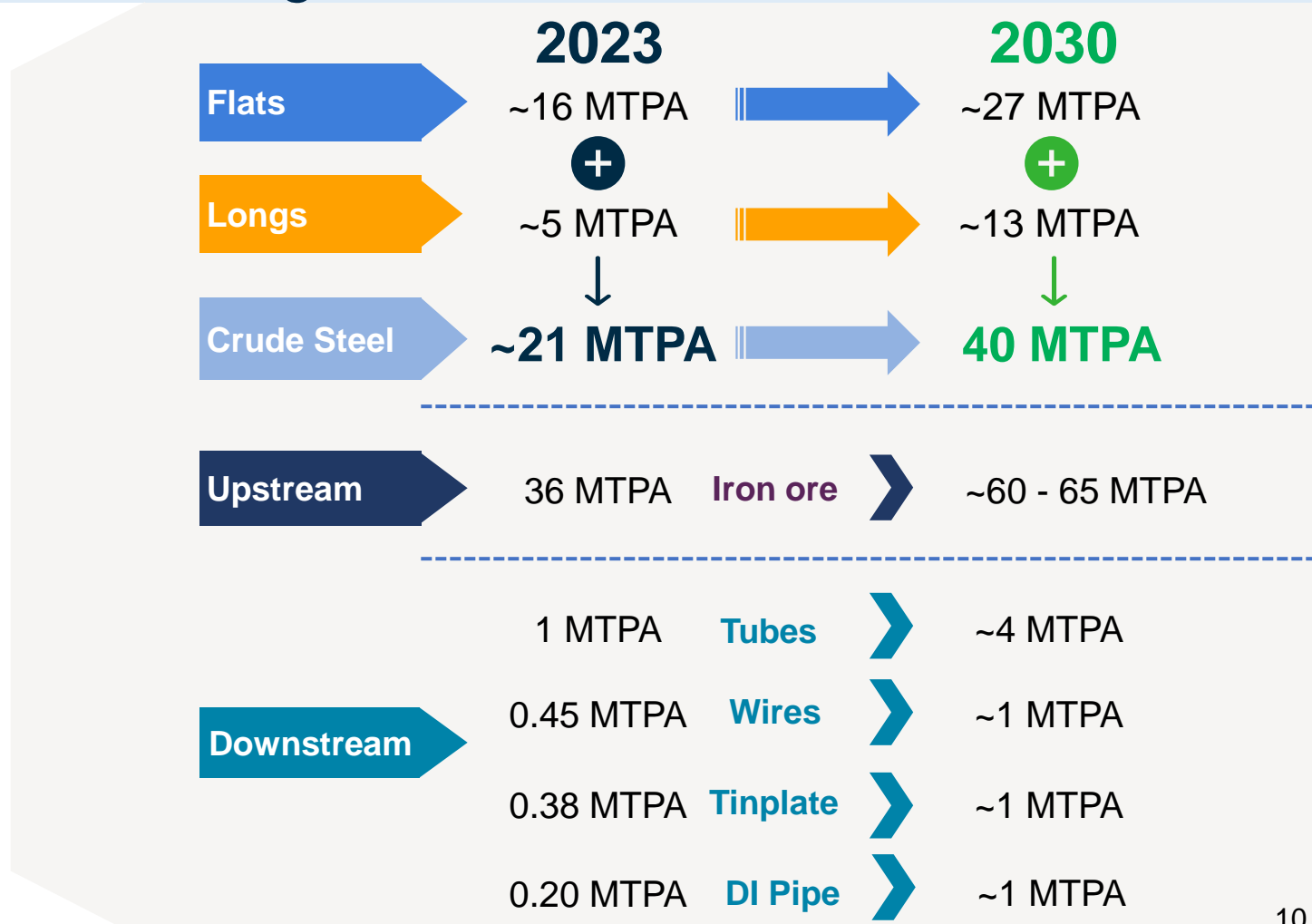
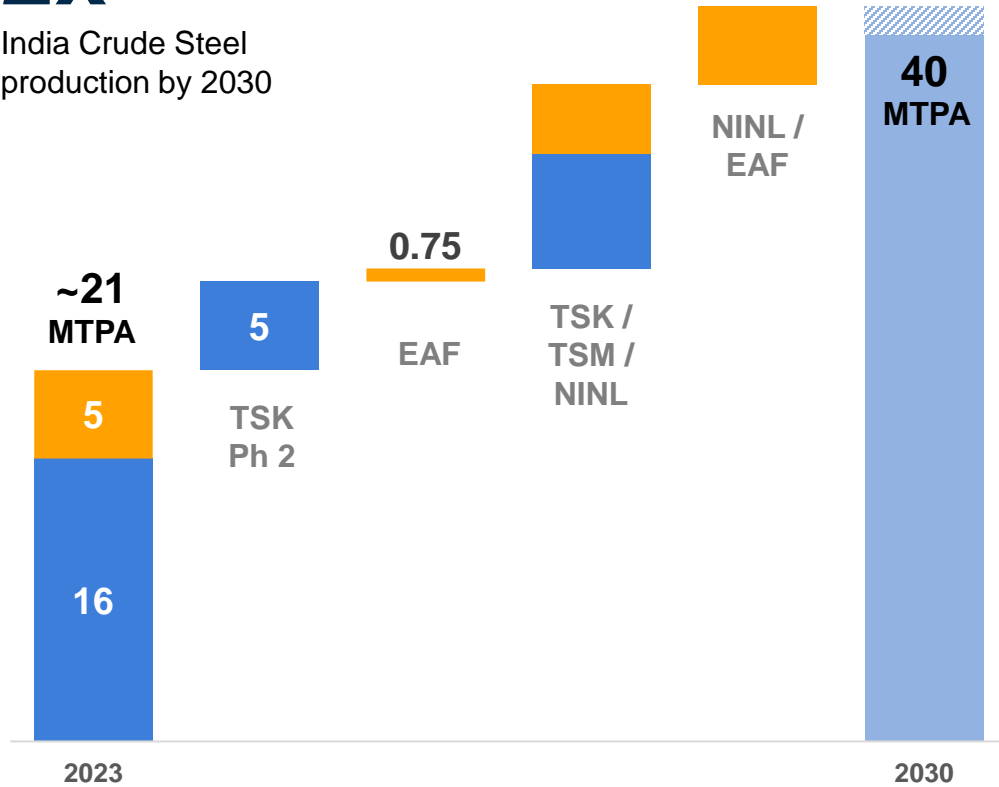
Growth in India to consolidate market leadership

Future investments set to drive sector leading returns

Leadership in India

2x

India Crude Steel production by 2030



Note : TSK – Tata Steel Kalinganagar, EAF – Electric Arc Furnace, TSM – Tata Steel Meramandali, NINL – Neelachal Ispat Nigam Limited and DI – Ductile Iron

Flats: 5 MTPA expansion progressing at Kalinganagar

Value added growth to maintain a future ready portfolio



Longs: Well-placed to more than double market share

Multilocational growth plans under execution

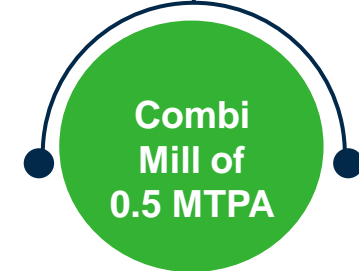
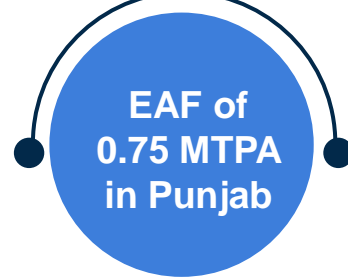
NINL, a strategic acquisition, ramping up well



Business model innovation through EAF based Mini Mill



State-of-the-art facility to deepen play in Specialty steel



Downstream: Value added growth for product mix enrichment

Tubes, Wires, Tinplate and Tata Metaliks

Tubes



Focus on capacity & technology to further market share

Wires



Wire capacity expansion of 0.1 MTPA underway

Tinplate



Tinplate capacity to be ~0.7 million tons by 2025

Ductile Pig Iron

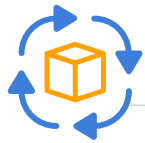


Progressing towards around 0.4 MTPA by FY24

We continue to drive improvements in operating efficiency

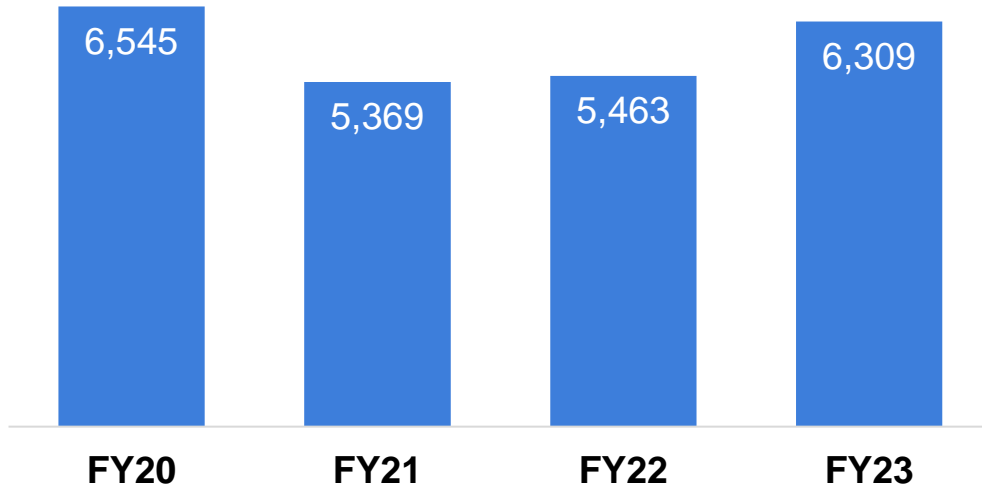
Focus on consolidating position as a global cost leader

5 year cost savings at Tata Steel India



Cost and Supply chain Optimisation

Rs crores



Scaling up Iron ore mining capacity



6 MTPA pellet plant commissioned at TSK



Improving logistics - Slurry pipeline, Inland waterways

Note: ¹ India incl. Tata Steel Standalone and Tata Steel Long Products

Digital ecosystem to empower business

Enable cultural readiness



Three assets recognized as 4IR Lighthouse



Digital ready culture



Digital leader in Global steel



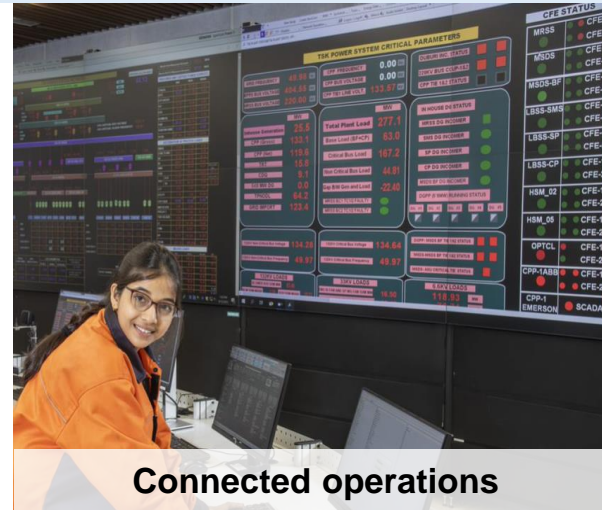
Digitally enabled savings

>\$1 bn business value potential created in last 5 years

200+ machine learning models developed

99.99% System availability

Note: 4IR – Fourth Industrial Revolution



Connected operations



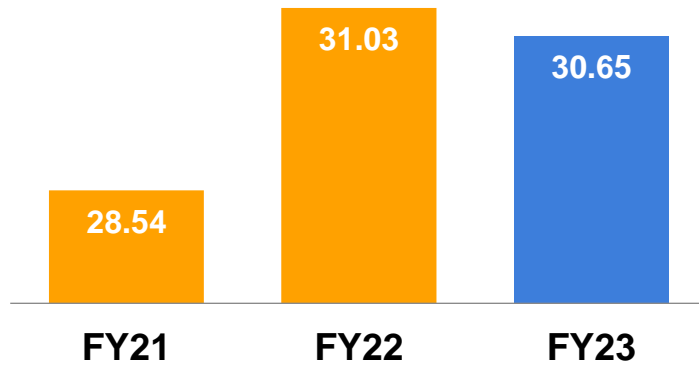
Connected assets



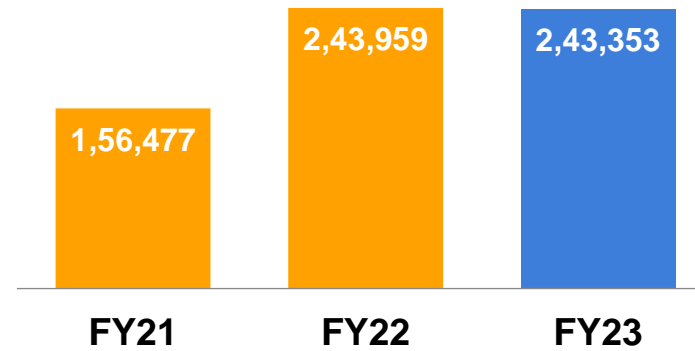
Connected workforce

Tata Steel Consolidated Financial Highlights

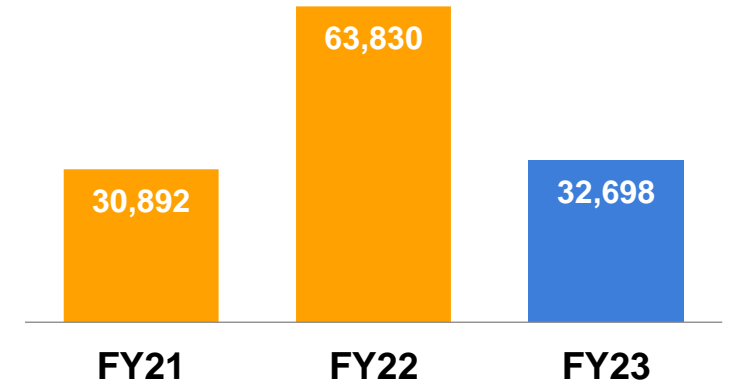
Production (mn tons)



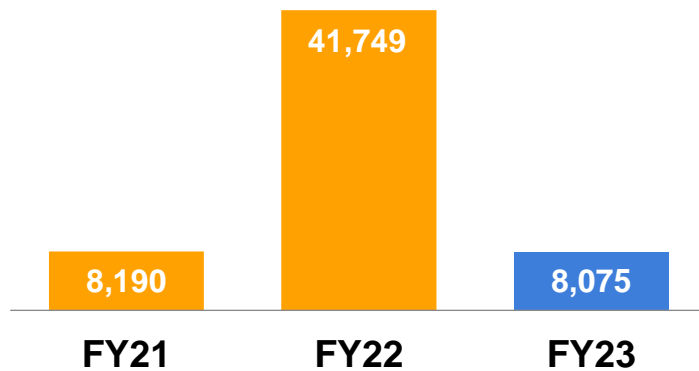
Revenues (Rs Crores)



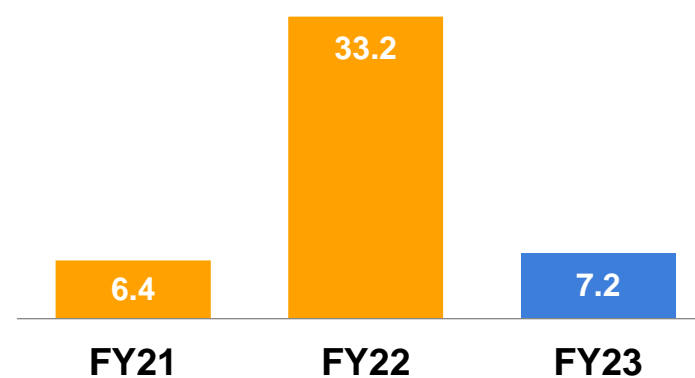
EBITDA (Rs Crores)



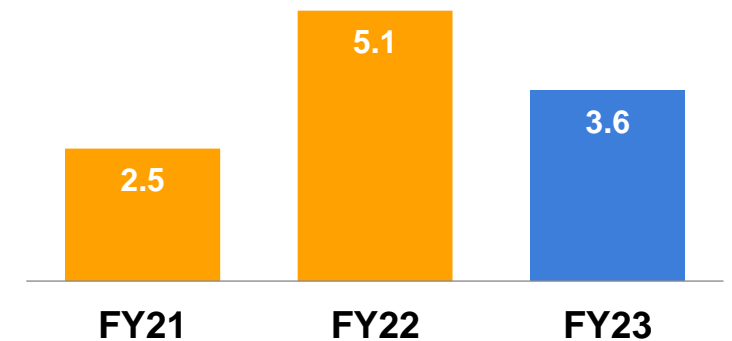
PAT (Rs Crores)



Diluted Earnings per share (Rs.)



Dividend per share (Rs.)



Note : Figures for previous periods have been regrouped and reclassified to conform to classification of current period, where necessary, Dividend per ordinary share of Face Value Rs 1/-

Our efforts are recognized globally and nationally



TSL and TSE recognized as 'Sustainability Champions' by Worldsteel (6th time in a row)



Jamshedpur is the first site in India to receive the Responsible Steel™ certification



Named top performer in Iron and Steel sector in Dun & Bradstreet's India's top 500 companies 2022



Great Place to Work Certified organisation in India for 2023 for the 6th time



Recognised as Global Diversity Equity & Inclusion Lighthouse 2023, for efforts to improve gender diversity at workplace



Recognised as 'Supplier Engagement Leader' for efforts in measuring and reducing environmental risks across supply chain

1st Winner of "Excellence in 3R (Reduce-Reuse-Recycle)" by CII

Jamshedpur Steel Plant recognised as Advanced 4th Industrial Revolution Lighthouse

Received worldsteel's Safety and Health Excellence Recognition for 2022

“ Journey Continues...
We value your inputs and suggestions.”



Tata Steel Limited

Bombay House, 24 Homi Mody Street, Fort, Mumbai - 400 001
www.tatasteel.com



Scan the QR Code to
read the report online

